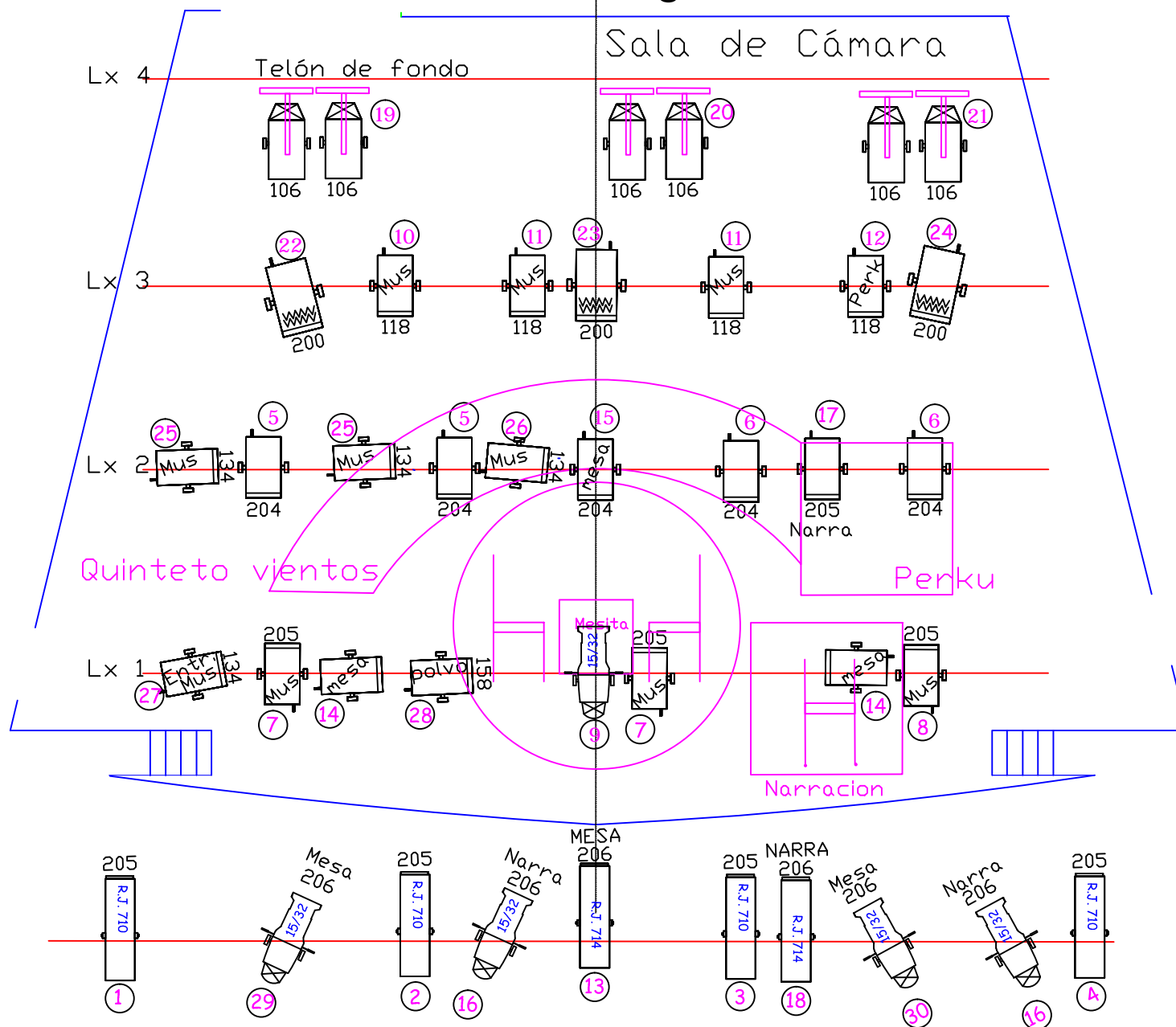
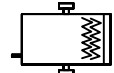
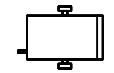


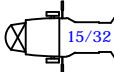
Centro Cultural Miguel Delibes

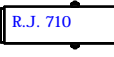
Sala de Cámara

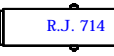


03 
Fresnell 2Kw

20 
Fresnell ADB 1Kw

05 
Rec. Strand SL 600w 15°/32°

04 
R.J. 710 2000W fijos en sala

02 
R.J. 714 2000W fijos en sala

06 
PAR Altman 600w

Diseño iluminación: Javier San Felipe
Adaptación: Miriam Zaragueta

"El Burlador sin Sardinia" Compañía Teatral pasadas las 4